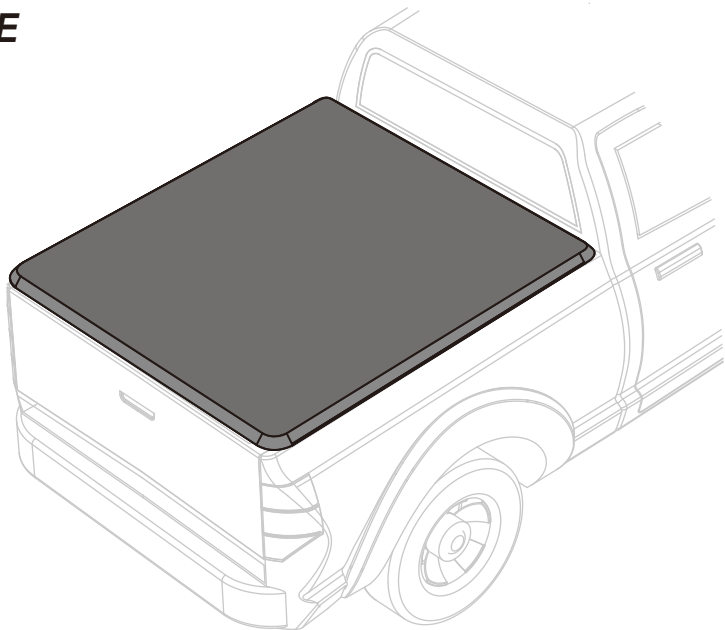
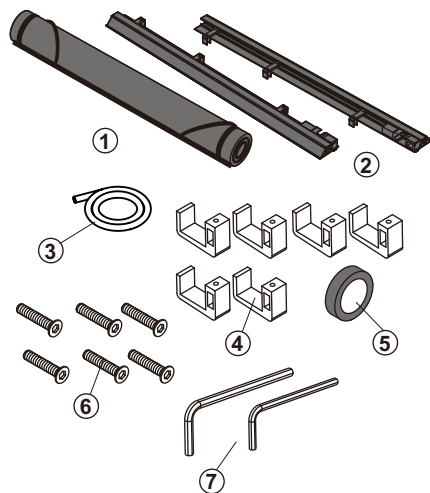


SOFT ROLL UP TONNEAU COVER

INSTALLATION GUIDE



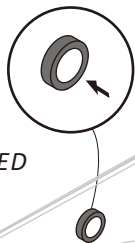
PARTS LIST



ITEM	DESCRIPTION	QTY.
1	Bed cover	1
2	Side Rails(L&R)	2
3	Seal strip 118(in)	1
4	G clamp	6
5	Light	1
6	screw	6
5	hexagonal wrench	2

- 1.** • Clean truck bed thoroughly before installation.
• Stick the supplied front seal strip on the front bed rail by aligning with the outer edge.

• Install the provided LED lamps according to the actual situation of the truck bed.



You might need:



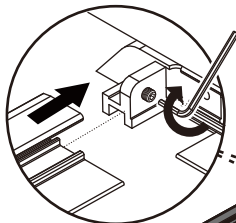
Seal Strip
(Only apply to some models)



ATTENTION!

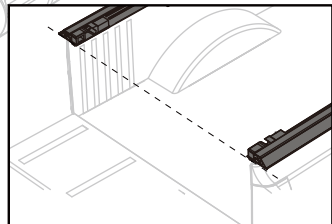
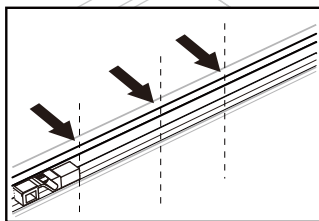
- IF THE TRUCK'S FRONT BED RAIL IS LOWER THAN THE SIDES, USE THE PROVIDED WEATHER SEAL STRIPS. GAPS ON THE FRONT BED AND TAILGATE WILL CAUSE NOISE AND FLAPPING ISSUES WHILE THE VEHICLE IS IN MOTION!

- 2.** • Insert Side Rails (L&R) into the front rail of the front end. Make sure the Side Rails are parallel and all placed on the bed rails. And check that the reserved positions of Side Rails and bed Rails are the same.

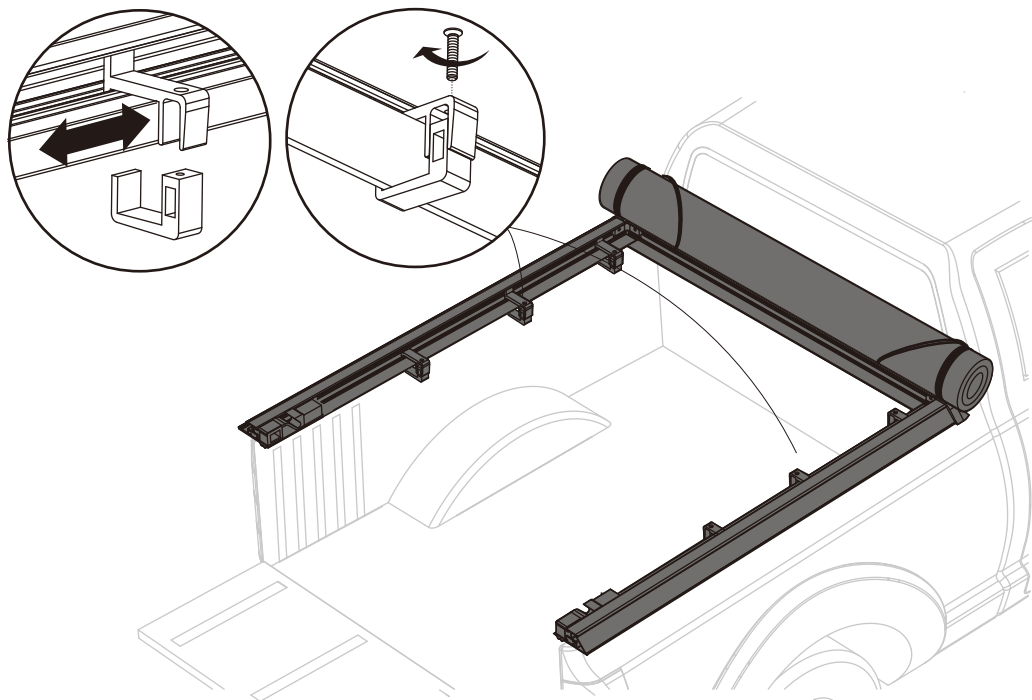


ATTENTION!

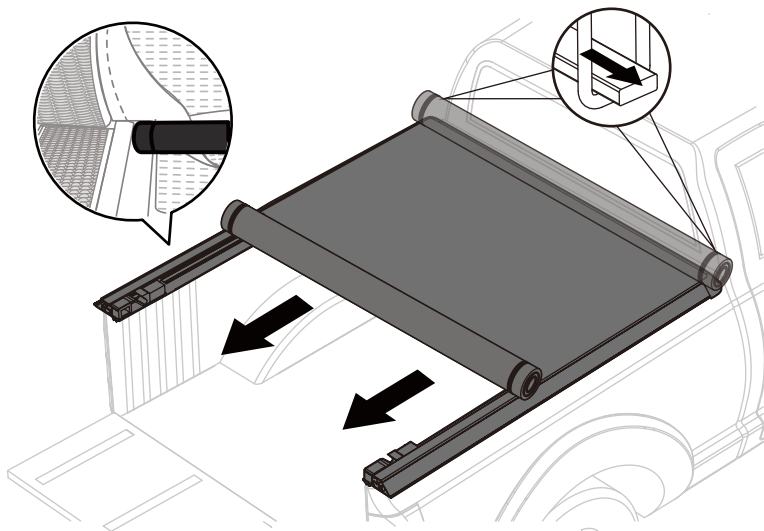
- MAKE SURE THE SIDE RAIL LINES UP WITH THE INNER EDGE OF THE TRUCK BED RAIL. PLACE THE SIDE RAILS EVENLY SO THAT THE DISTANCE BETWEEN THE REAR END OF THE SIDE RAIL TO THE TAILGATE IS THE SAME ON BOTH SIDES.



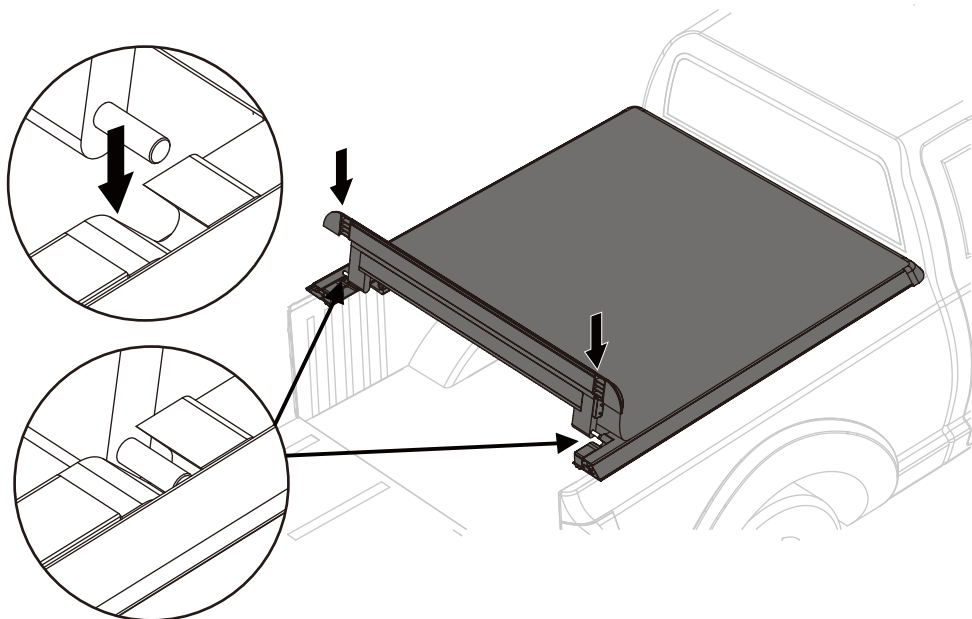
- 3.** • Slide the front clamp to the best position, clamp the interface under the metal bed rail point, and then use the Triangle screw to rotate into the metal rod to fix the entire clamp



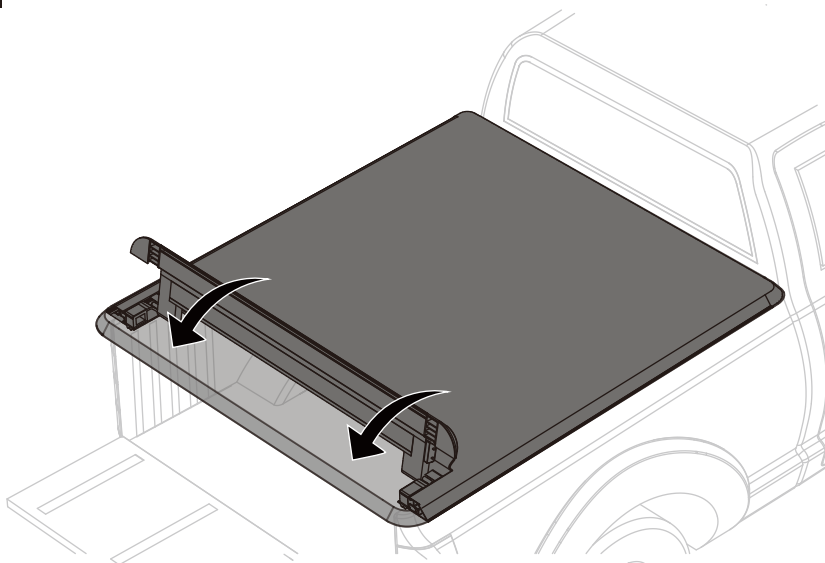
- 4.** • Untie the spring cords on both sides of the bed cover and unfold the bed cover to ensure correct and neat coverage of the entire lathe



- 5.** • Snap the tail lock into the lock groove of the side rails as shown



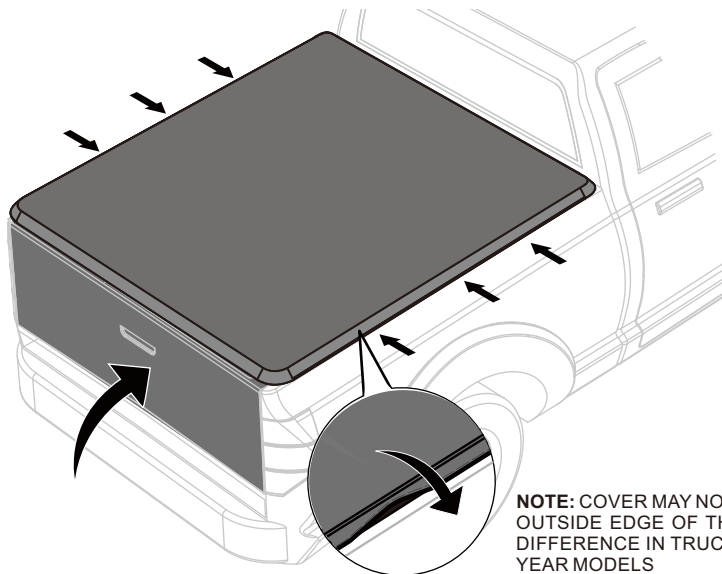
- 6.** • Press down to close the cover and the lock will automatically clamp.



7. FINISH THE INSTALLATION

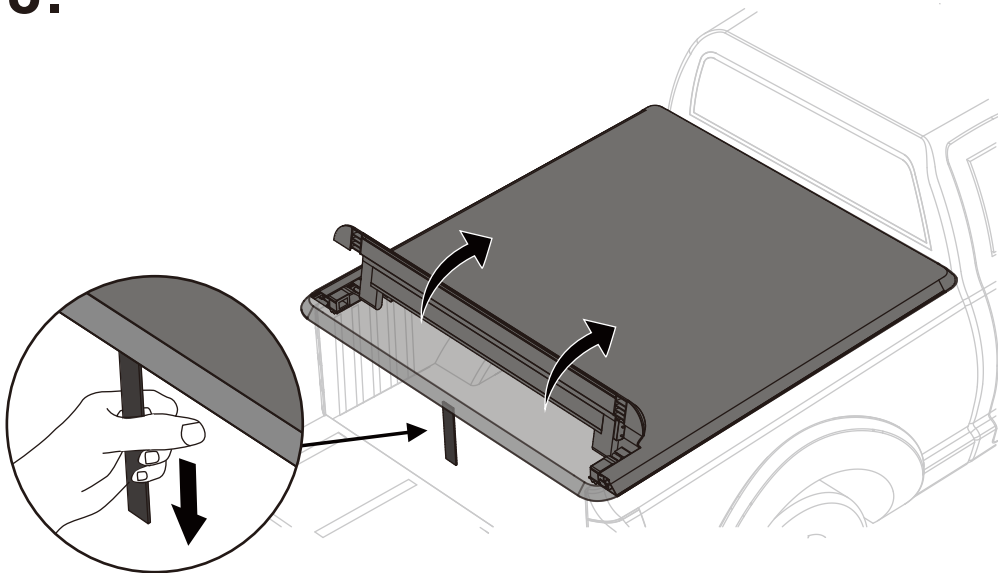
- Tighten the velcro on both sides of the bed cover. Make the cover more docile and overall, and finally complete the installation.

COMPLETED!!!

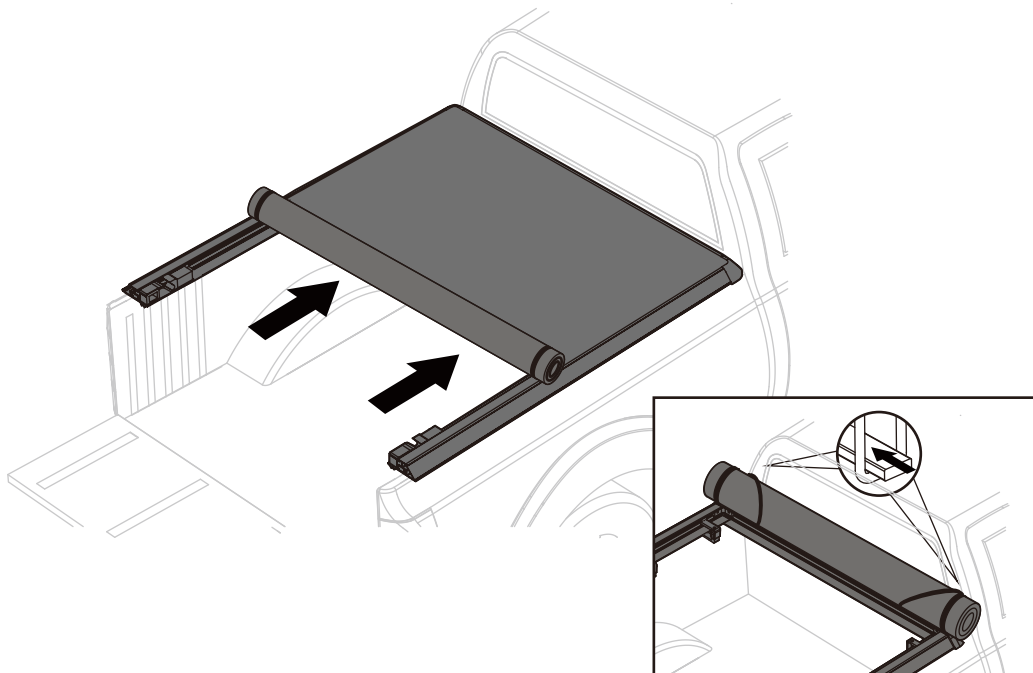


NOTE: COVER MAY NOT COMPLETELY COVER TO THE OUTSIDE EDGE OF THE BED RAILS DUE TO SLIGHT DIFFERENCE IN TRUCK BED SHAPE FOR DIFFERENT YEAR MODELS

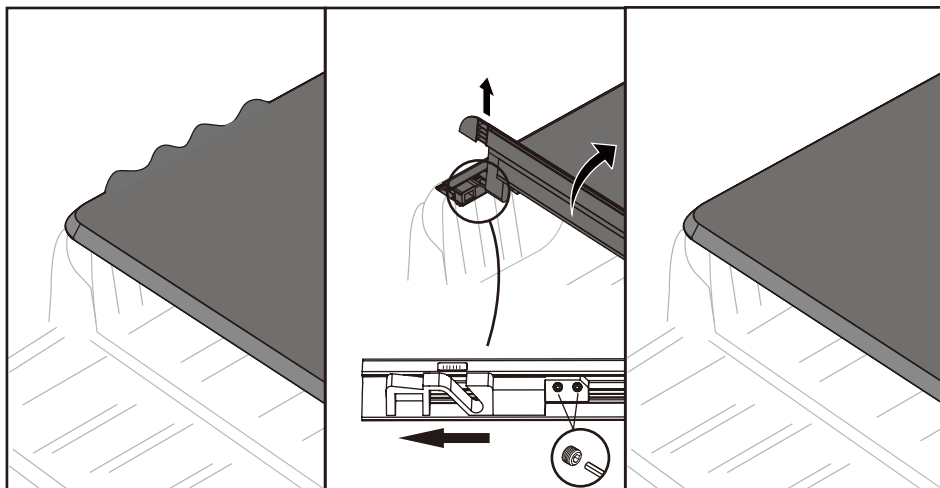
8. • Open the tailgate, pull down the rope, and the lock will automatically open.



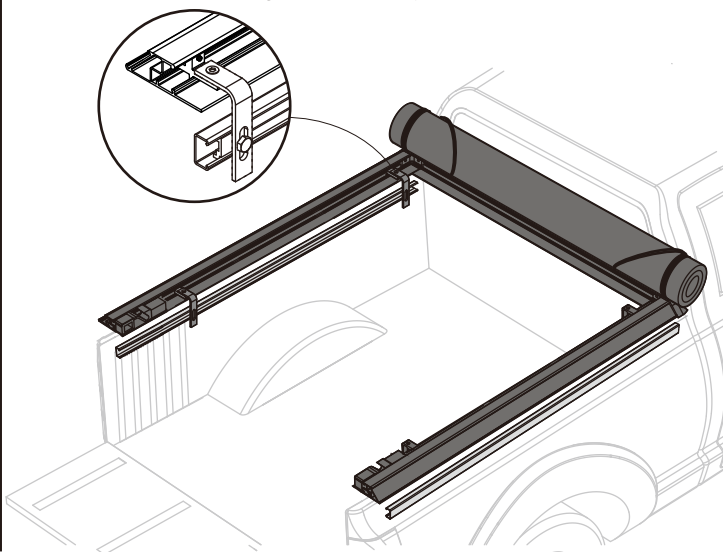
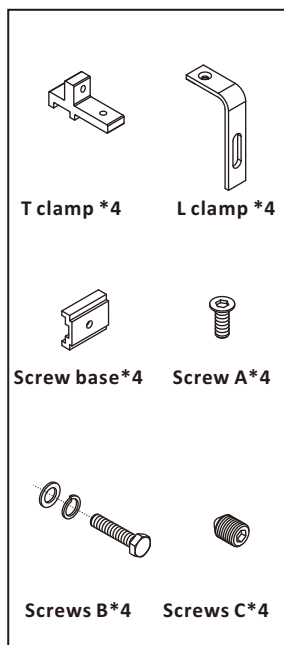
- 9.** • Roll up the tarp and buckle the spring cord to enjoy plenty of bed space.



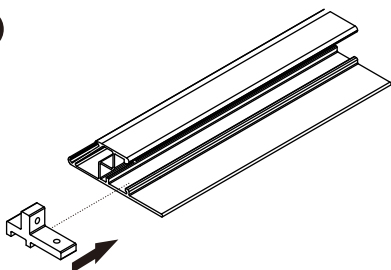
- 10.** • There is a scale label on the tail of the side rail. If you find that the bed cover tarp is loose, you can move the tail lock backwards according to the situation. Will make the tarp tighter.



SPECIAL INSTRUCTIONS FOR ALTERNATIVE BRACKETS SUPPLEMENT TO INSTALLATION INSTRUCTIONS (Only for models with system track)

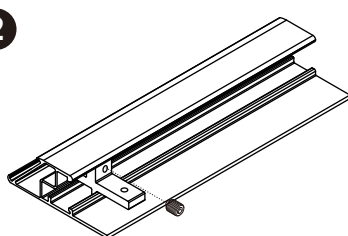


1



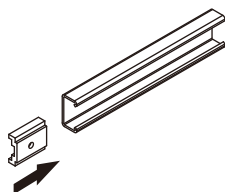
- Slide the T clamp into the side rail

2



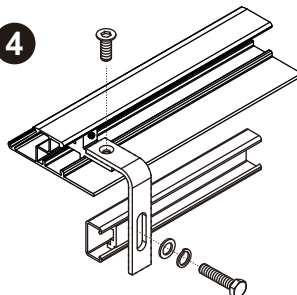
- Fixed with screw C

3



- Slide the screw base into the system track

4



- Use L clamp and screw B to fix system rail and side rail